

COMPANY PROFILE

2022-2023





TABLE OF CONTENTS

- 01 - Introduction
- 02 - Our Aims
- 03 - Organizational Structure
- 04 - Strategies & Tactics
- 05 - Our Partners
- 06 - Our Channels
- 07 - Our Projects
- 08 - Contact Us





INTRODUCTION

MODERN DEVELOPMENT Co. Which is a leading real estate development company in Kuwait, publicly traded since 1994 and delivers world class developments that contribute to the built environment through a culture which embraces a team-based approach, fosters communication and builds lasting stakeholder relationships. With a capital of 10 million Kuwaiti Dinars .

MODERN DEVELOPMENT Co., is among the most successful real estate developers in the region and are valued throughout for the beauty and creativity of their architecture.

The DAR EL ESCAN Co. Is a dynamic organization based in Kuwait , that incorporates a diverse portfolio of successful companies, with retail as its primary focus, DAR EL ESCAN , is Kuwait's largest independent retailer and a leading supplier in the field of constructions and public projects .

ROYAL EAGLE Co. Brings efficiency to supply chains in some of the world's most challenging environments, offering unmatched personal service, a global footprint and customized capabilities in developed countries and emerging economies.

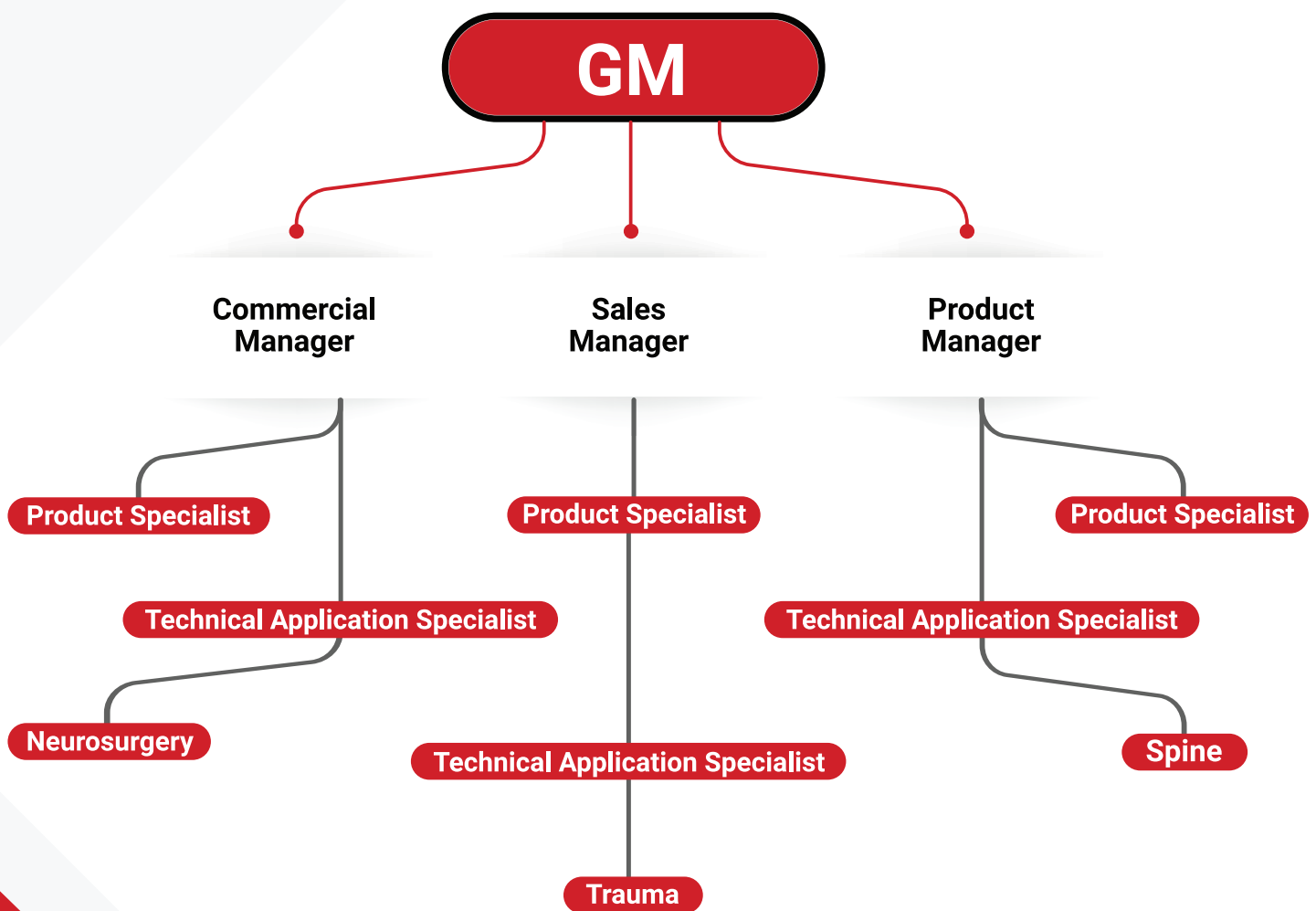
MD Medical established under Kuwaiti law in 2017 with Capital of 250,000 K.D



OUR BUSINESS AIMS FOR CONTINUOUS GROWTH & INVESTING IN LONG TERM

Provide resources in terms of funding to be able to get involved in larger investments with higher returns that will bring significant growth and returns to the business.

ORGANIZATIONAL STRUCTURE





STRATEGIES & TACTICS

MEETING THE MARKET'S DEMANDS

Meeting the changing demands of Kuwait's market by providing state of the art products and efficient services.

MAINTAIN AND INCREASE CLIENT SATISFACTION

Maintain relationships with MD'S clients and provide scientific support services to our clients.

FOCUSING ON KOLS

Hosting workshops with Key Opinion Leaders in Kuwait.

INCREASING EDUCATIONAL ACTIVITIES

Host workshops and educational activities at Kuwait University.

OUR PARTNERS



Hand & Wrist , Neurosurgery
General surgical instruments.



Spine full solution Instrument & Implant.



IperALA® is a food supplement with antioxidant
properties for nerve function.



ActiPatch & RecoveryRX a new and clinically proven
drug free technology in the fight against chronic pain.



XOIN Topical Adhesive Glue.



CLICK HERE TO VISIT ALL OUR SECTIONS



Neuro



Orthopedic



Spine



Medical Supplies



Medical Equipment

OUR CHANNELS

- Orthopedic (Doctors, Clinics & Centers).
- Neuro (Doctors, Clinics & Centers).
- Private Hospitals Ex. (Al-Seif, Al-Salam, New Mowasat, Dar Al-Shifa. Etc).
- MOH Hospital.
- MOD Hospitals.
- Daman Hospitals.
- Pharmacies Ex. (Royal Pharma, YAICO, Al-Ghanem. Etc).
- Wholesales Ex. Co-operation Society.



OUR PROJECTS

- Processing & management the physiotherapy centre.
- Joint Venture Project With KLS Martin Group.

BUSINESS & ADMINISTRATIVE CONTACT INFORMATION



Business Name : MD - Modern Development Co.
for trading in medical medicine, equipment
& supplies will.



Head Office

Kuwait - Mohammed Thunyan Al-Ghanem
Street Salhiya Complex, Entrance 4, 1st Floor, Office No.120



Branch 1

Kuwait, Hawally Governorate, Salmiya, Block 2, Abdullah Bin
Masoud Street, Al-Ras Tower, Floor 3, Office No.B3



info@mdmedical.co
www.mdmmedical.co



+965 22474644
+965 22474944



23014 Safat, 13091 Kuwait





OUR PLEASURE TO DO BUSINESS

END